



Milly's
KNIT DESIGNS

TOGETHER



Samples knit in YOTH Yarns Neighbor and Big Sister

yarn

Designed for DK weight yarn.

Toddler (Child) Uses 198 (227) yd / 182 (208) m

Adult S (M, L) Uses 183 (194, 211) yd / 167 (178, 193) m

Sample knits

Toddler: YOTH Yarns Big Sister (80% Merino Wool, 10% Goat Cashmere, 10% Nylon, 231 yd / 211 m, 100 g) in Lavender

Adult M: YOTH Yarns Neighbor (100% Domestic Wool, 200 yd / 183 m, 95 g) in Mulberry

gauge

22 sts x 31 rows = 4" / 10 cm in stockinette in the round, blocked

needles

US 4 / 3.5 mm 16" / 40 cm circular needle

US 6 / 4.0 mm 16" / 40 cm circular needle and DPNs

tools

tapestry needle, stitch markers (qty 2)

finished size

Toddler (Child)

To fit head: 16.75 (18)"/42.5 (46) cm around.

Adult S (M, L)

To fit head: 19 (20.25, 23)"/48.5 (51.5, 58.5) cm around.

The hat is worn with 2⁷/₅ cm of negative ease.

abbreviations

BOR beginning of round

DPNs double pointed needles

K (k) knit

k2tog knit 2 sts together (dec2 sts)

P (p) purl

rep repeat

RS right side

ssk slip slip knit

sk2p slip 1, knit 2 together, pass slipped stitch over

st(s) stitch(es)

yo yarnover

additional info

difficulty level: adventurous beginner

TOGETHER continued

TODDLER & CHILD SIZES ONLY

brim

With your smaller needles, CO 90 (98) sts, using a German Twisted cast-on. Place your BOR marker and join in the round. Be careful not to twist your stitches.

1x1 Ribbing: *K1, p1; rep from * to end.

Continue to work in 1x1 ribbing until your brim measures 0.75 (1) / 2 (2.5) cm.

hat body

Change to your larger needles.

Set-up rnd: K50 (50), pm, k to end of rnd.

Continue now to knit from Toddler/Child chart to marker, sm, knit to end.

Repeat from rounds 1- 46 (54).

Continue to finishing.

finishing

Adjust your stitches for the 3-needle bind-off. You will want to have the lace pattern split between the front and back of the hat.

Turn your work inside out, adjust your stitches and then begin the bind-off using the 3-needle bind-off technique.

Cut yarn leaving a tail to weave in when finished. Remove your BOR and with a 2nd needle slip 23 sts from left needle onto 2nd needle. Then slip 22 sts from your right needle onto your 2nd needle. You should not have 45 (49) sts on each needle. Total of 90 (98) sts.

For your 3rd working needle use a DPN or another appropriate sized needle.

With WS facing out, holding needles parallel, insert your 3rd (working) needle in to the first st on each of the 2 needles and wrap your yarn around to knit these 2 sts together.

Repeat with the next sts, then pass the first st on the working needle over the 2nd st and off the needle as you normal would to bind-off.

Continue to the end. Break your yarn and pull the tail through your last st to fasten off. Turn your hat right side out.

Weave in your ends and continue to blocking.



Sample knit in YOTH Yarns Big Sister

blocking

Soak your hat in lukewarm water with your favorite wool wash or essential oil for 10-15 minutes. Gently squeeze or press hat to let out excess water. Do not wring. Place your hat on a towel and roll up to help remove any additional water. Your hat should now feel damp.

Lay flat to dry.

TOGETHER continued

CHART FOR TODDLER SIZES ONLY

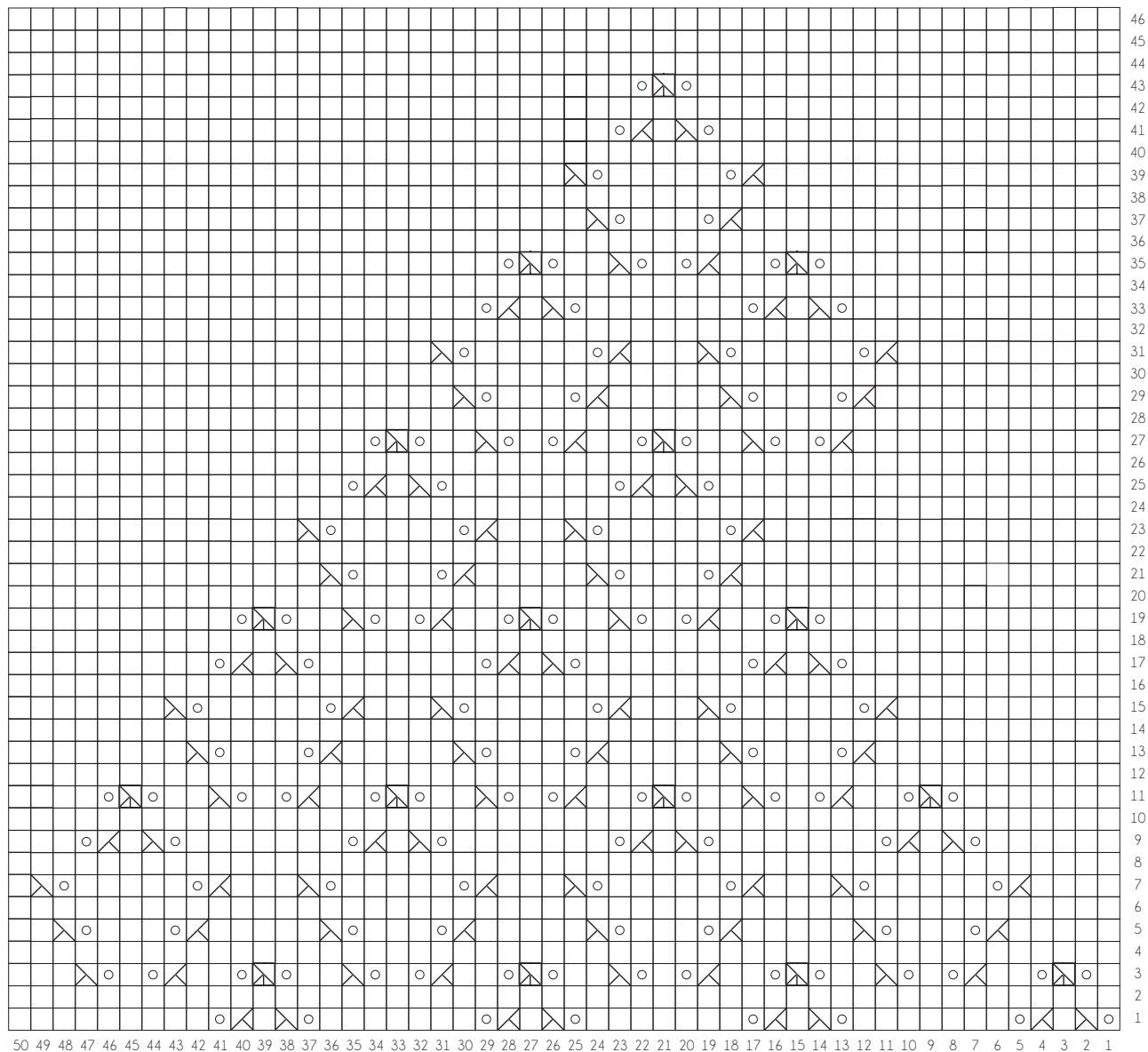
When reading your chart while knitting in the round, you will read from right to left.

In each round, when you reach the end of the chart, you will then slip your stitch marker and knit to the end of the round. Continue to work the chart to the end and continue to the finishing section.

KEY

	Knit		k2tog
	Purl		ssk
	Yarnover		sk2p

TODDLER CHART



TOGETHER continued

CHART FOR CHILD SIZES ONLY

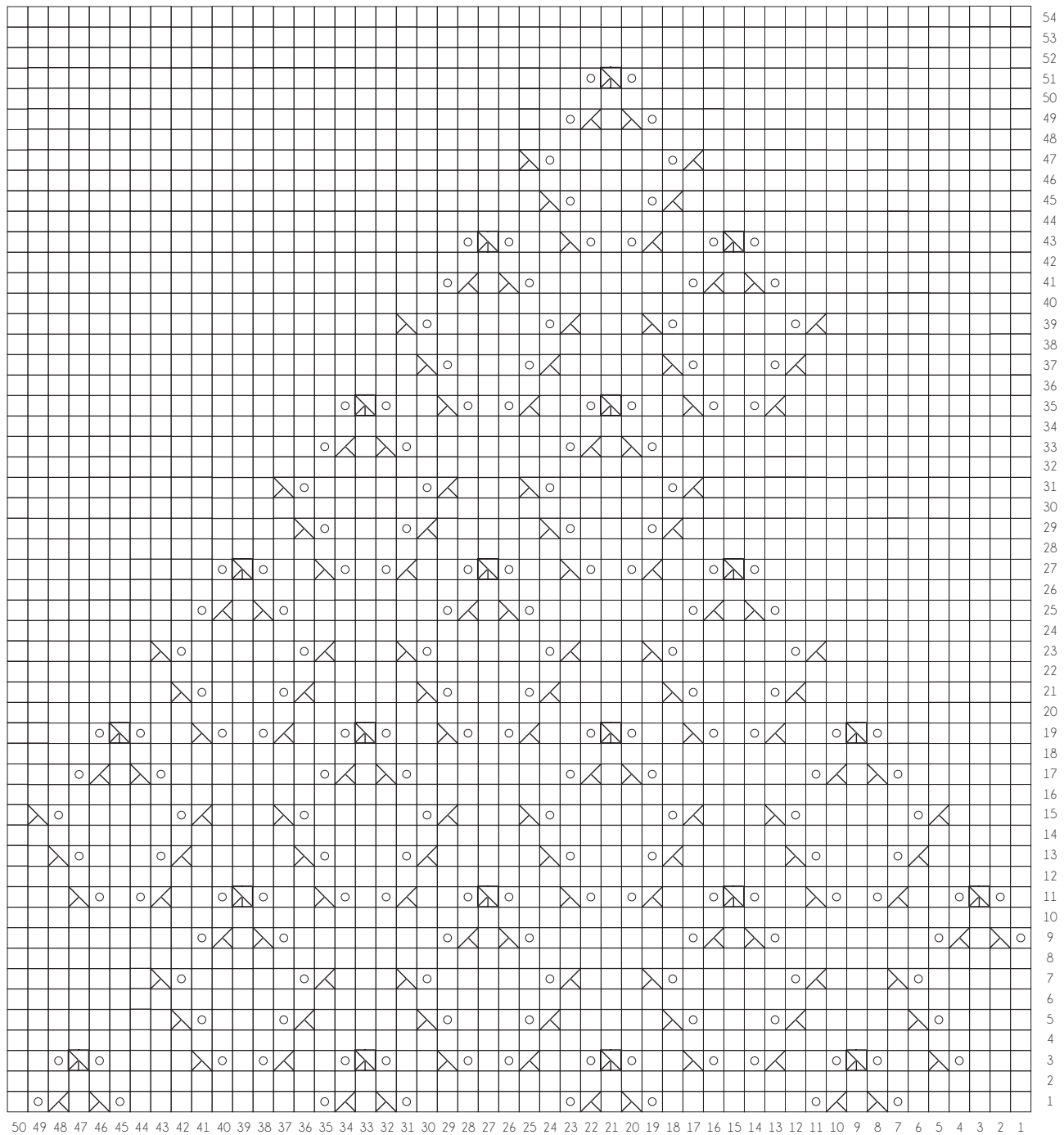
When reading your chart while knitting in the round, you will read from right to left.

In each round, when you reach the end of the chart, you will then slip your stitch marker and knit to the end of the round. Continue to work the chart to the end and continue to the finishing section.

KEY

- Knit
- k2tog
- Purl
- ssk
- Yarnover
- sk2p

CHILD CHART



TOGETHER continued

ADULT S, M, L SIZES ONLY

brim

With your smaller needles, CO 104 (112, 128) sts, using a German Twisted cast-on. Place your BOR marker and join in the round. Be careful not to twist your stitches.

1x1 Ribbing: *K1, p1; rep from * to end.

Continue to work in 1x1 ribbing until your brim measures 1.25 (1.5 1.75)" / X (X, X) cm.

hat body

Change to your larger needles.

Set-up rnd: K50 (60, 60), pm, k to end of rnd.

Knit 2 (3, 3) rounds.

Continue now to knit from chart to marker, sm, knit to end. See charts on next page.

Continue now to knit from Adult S (M, L) chart to marker, sm, knit to end.

Repeat from rounds 1- 52 (48, 54).

crown shaping

Note: Switch to dpns when the circumference of the hat no longer fits comfortably around your circular needles.

Rnd 1: *K2, k2tog; rep from * to end of rnd. [26 (28, 32) sts dec'd, 78 (84, 96) sts remaining]

Rnd 2: Knit.

Rnd 3: *K1, k2tog; rep from * to end of rnd. [22 (24, 26, 28, 32) sts dec'd, 44 (48, 52, 56, 64) sts remaining]

Rnd 4: Knit.

Rnd 5: *K2tog; rep from * to end of rnd. [22 (24, 26, 28, 32) sts dec'd, 22 (24, 26, 28, 32) sts remaining]

Rnd 6: Knit.

Rnd 7: *K2tog; rep from * to end of rnd. [11, 12, 13, 14, 16) sts dec'd, 11 (12, 13, 14, 16) sts remaining]

Rnd 8:

S sizes only: K1, *k2tog; rep from * to end of rnd. [5 (6) sts dec'd, 6 (7) sts remaining]

M and L sizes only: *K2tog; rep from * to end of rnd. [6 (7, 8) sts dec'd, 6 (7, 8) sts remaining]

Continue to finishing.

finishing

Break yarn and pull tail through remaining live sts on your needles. Pull tight, weave in ends.

Soak your hat in lukewarm water with your favorite wool wash or essential oil for 10-15 minutes. Gently squeeze or press hat to let out excess water. Do not wring. Place your hat on a towel and roll up to help remove any additional water. Your hat should now feel damp.

I often blow up a balloon inside the hat, smooth out the stitches and let it dry. Another option is to lightly fill the hat with plastic bags to help it hold its shape and then place it on a tall 3-D object to dry.



Sample knit in YOTH Yarns Neighbor

TOGETHER continued

CHART FOR ADULT S SIZES ONLY

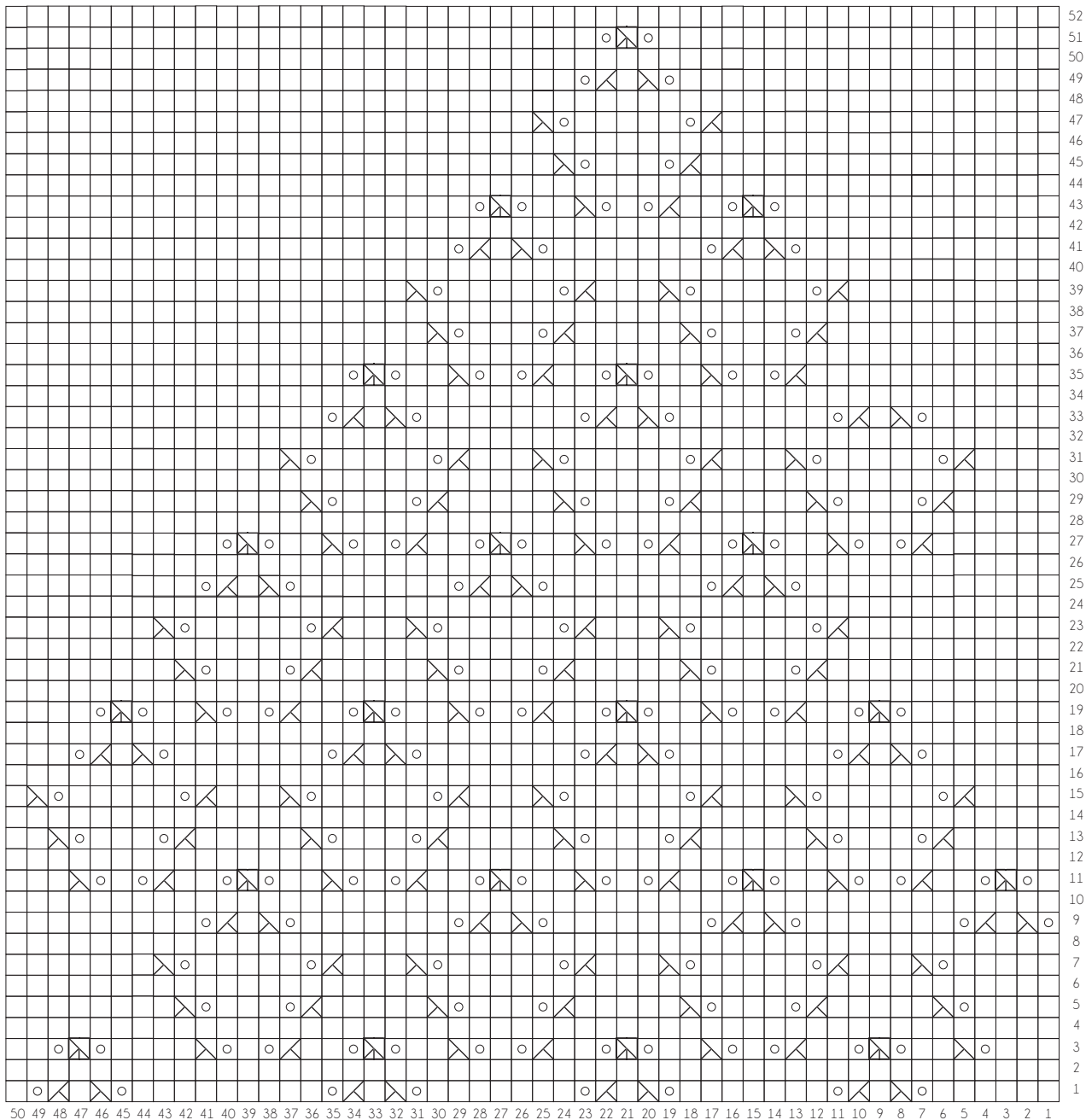
When reading your chart while knitting in the round, you will read from right to left.

In each round, when you reach the end of the chart, you will then slip your stitch marker and knit to the end of the round. Continue to work the chart to the end and continue to the finishing section.

KEY

- Knit
- ◻ k2tog
- Purl
- ◻ ssk
- Yarnover
- ◻ sk2p

ADULT S CHART



TOGETHER continued

CHART FOR ADULT M, L SIZES ONLY

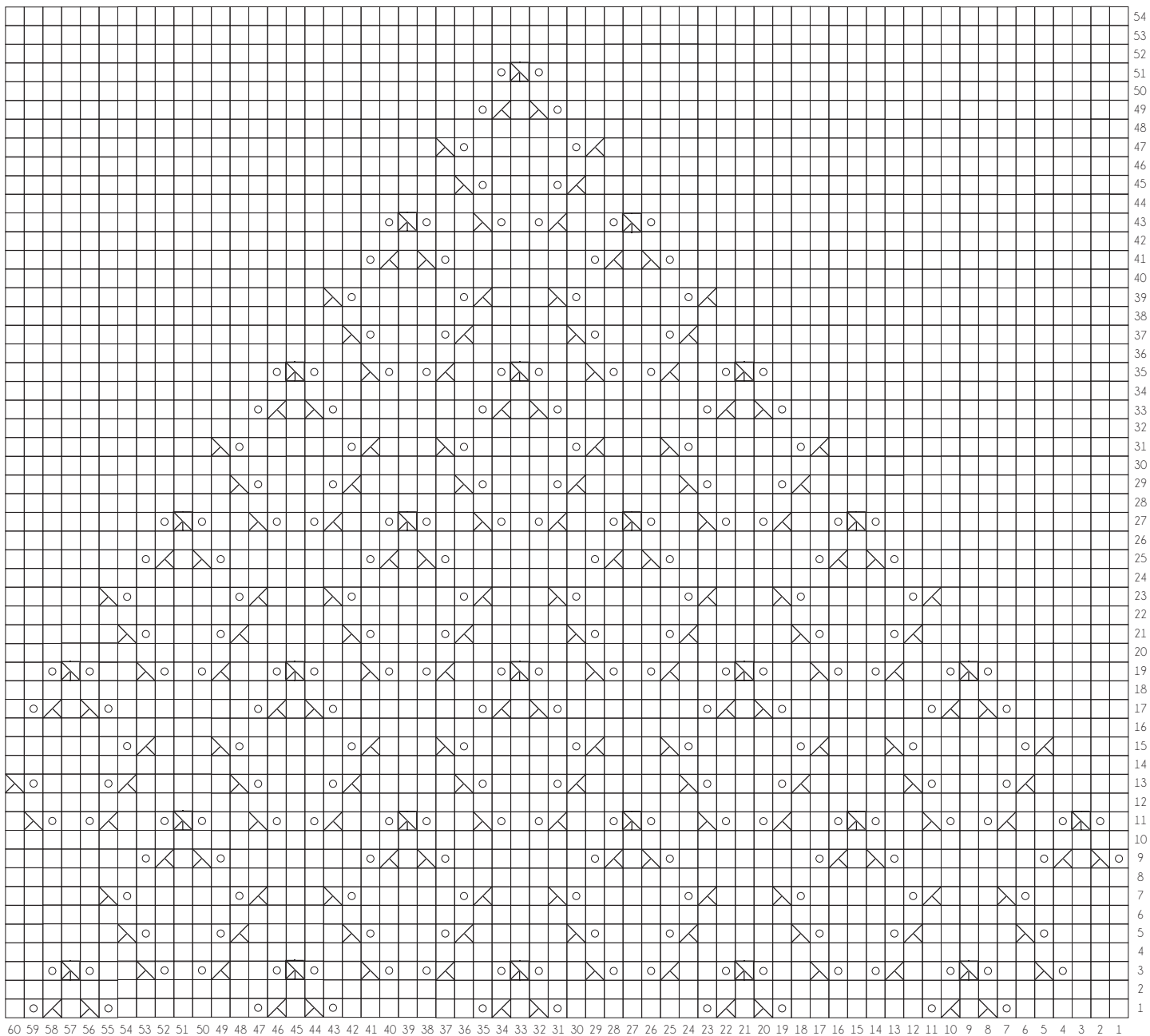
When reading your chart while knitting in the round, you will read from right to left.

In each round, when you reach the end of the chart, you will then slip your stitch marker and knit to the end of the round. Continue to work the chart to the end and continue to the finishing section.

KEY

- Knit
- k2tog
- Purl
- ssk
- Yarnover
- sk2p

ADULT M, L CHART



DONATING HATS TO CHARITY

When donating handknit items to charity always check with the charity for any specific requirements or requests they may have.

Often times they will request wool. Wool is warm and stays warm even when it's wet. Using a fiber that is at least 80% wool is often a good option. And superwash may not be required or preferred, again, check with your charity you are making for more details.

The items donated are often worn indoors as well as outside, because homes are often very cold. Recommended charity patterns may call for worsted weight, aran, or bulky yarn. You may want to consider using a smaller needle size than is recommended in order to produce a dense enough fabric.

Understand what the need is at the charitable organization too. Some may prefer hats and mittens only. You may find that scarves and cowls are not preferred, but possible a sweater or blanket. Socks are a common item in need for those less fortunate. And check out which sizes are most desired. A charity may focus more on children and need those sizes versus adult sized pieces.

Thank you for your generosity. Many of us are fortunate to be in positions to have plenty and to be able to give and share with others is kind and generous.



@milysknitdesigns



Pattern support, wholesale inquiries & questions:
milysknitdesigns@gmail.com

MILYSKNITS.COM

Milly's
KNIT DESIGNS